

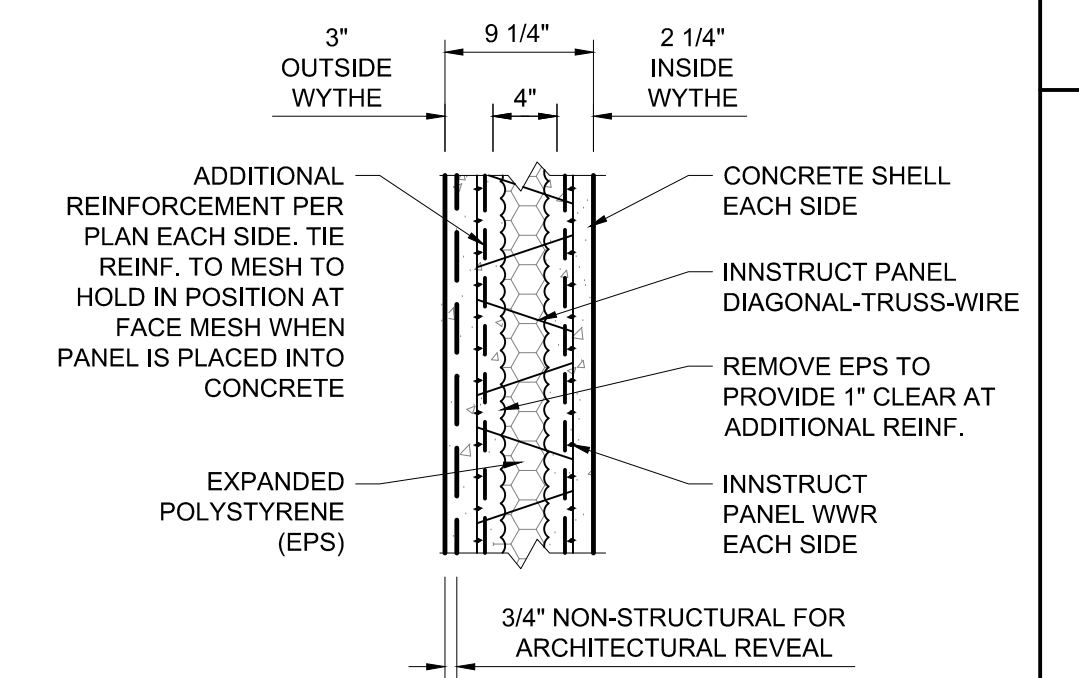
TIPS REINFORCING
3/8" = 1'-0"

LIMITATION OF COMPARISON:
TIPS COMPARISON DRAWINGS ARE PRELIMINARY
AND ARE SUBJECT TO CHANGE BASED ON FINAL
DESIGN.

BAR SIZE LEGEND:

- #3 - CYAN
- #4 - BLUE
- #5 - RED
- #6 - GREEN
- #7 - PURPLE
- #8 - PINK

TIE BAR - - - - (SIZE PER COLOR)



TYPICAL TIPS SECTION
SCALE: N.T.S.

TIPS
3" EXTERIOR CONCRETE WYTBE (COMPOSITE)
4" EPS INSULATION
2-1/4" INTERIOR CONCRETE WYTBE (COMPOSITE)
9-1/4" TOTAL THICKNESS

PRELIMINARY DRAWING NOT FOR CONSTRUCTION							FORSGREN Associates Inc.
INNOVATIVE STRUCTURAL SOLUTIONS							PROJECT NO. 11 DRAWN _____ DESIGNED _____ APPROVED _____ QA/QC _____
PROJECT 11A							TIPS COMPARISON
SHEET NO:							REVISIONS NO. BY DATE This document or any part thereof in detail or design shall be the property of Forsgren Associates Inc. and shall not be used without the written authorization of Forsgren Associates Inc.
DATE: NOVEMBER 2020							95 WEST 100 SOUTH, STE. 115, LOGAN, UT 84321 PH: 435.227.0333 FAX: 435.227.0334
PAGE NO:							