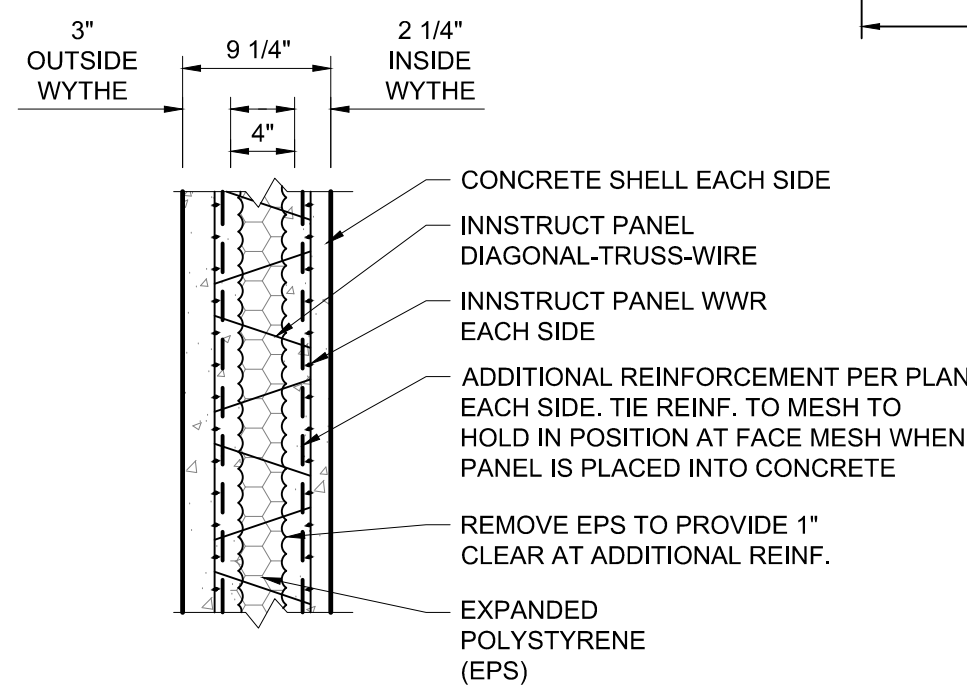
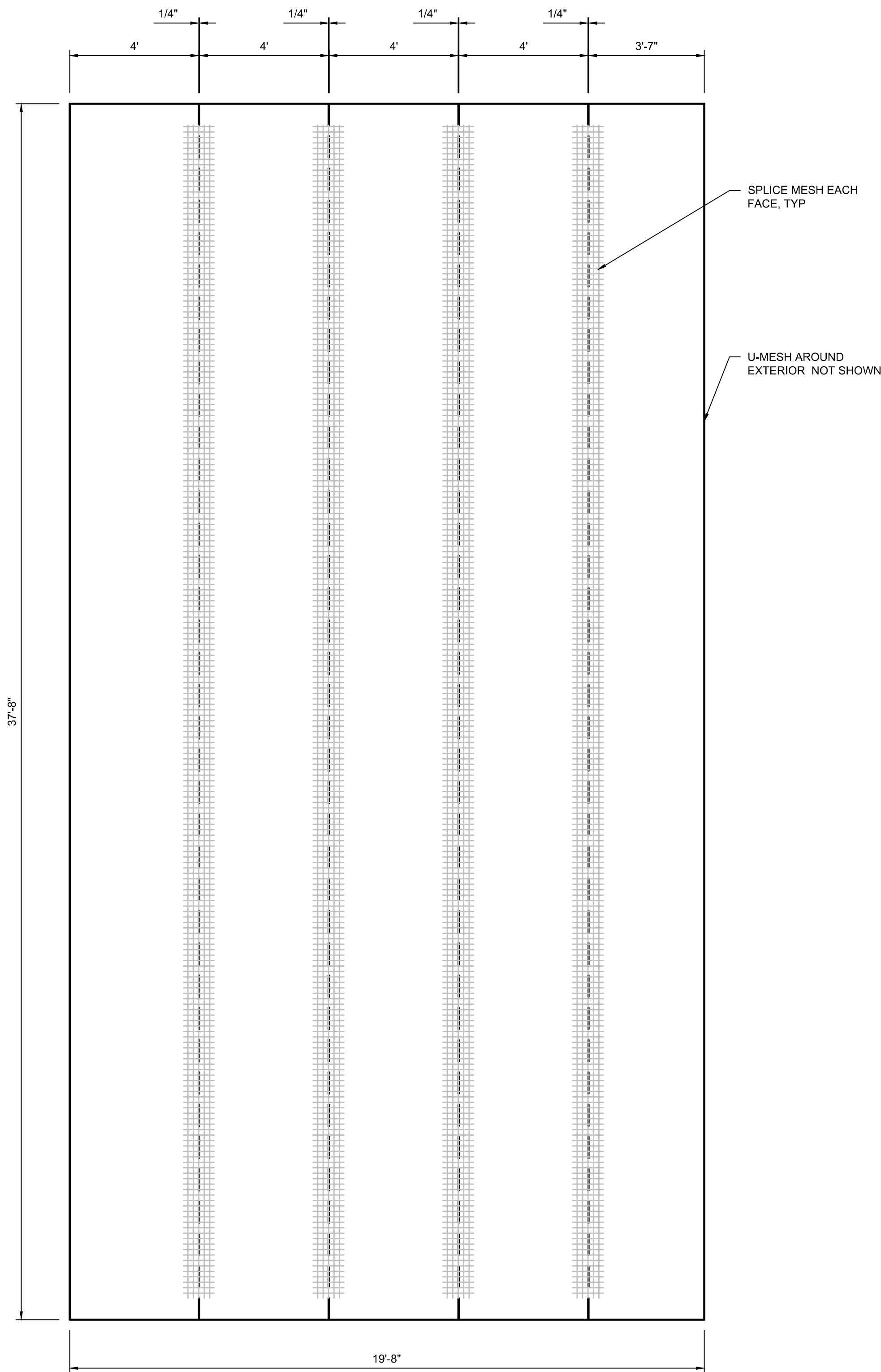


TIPS REINFORCING
3/8" = 1'-0"

TIPS
3" EXTERIOR CONCRETE WYTHE (COMPOSITE)
4" EPS INSULATION
2.25" INTERIOR CONCRETE WYTHE (COMPOSITE)
9.25" TOTAL THICKNESS



TYPICAL TIPS SECTION
SCALE: NTS



TIPS LAYOUT
3/8" = 1'-0"

LIMITATION OF COMPARISON:
TIPS COMPARISON DRAWINGS ARE PRELIMINARY AND ARE SUBJECT TO CHANGE BASED ON FINAL DESIGN.

BAR SIZE LEGEND:

- #3 - CYAN
- #4 - BLUE
- #5 - RED
- #6 - GREEN
- #7 - PURPLE
- #8 - PINK

TIE BAR - - - - (SIZE PER COLOR)

NO.	REVISIONS	BY	DATE

FORSGREN Associates, Inc.
95 WEST 100 SOUTH, STE. 115, LOGAN, UT 84321
PH: 435.227.0333 FAX: 435.227.0334
Forsgren Associates Inc.

PRELIMINARY DRAWING NOT FOR CONSTRUCTION

PROJECT NO. 4
DRAWN
DESIGNED
APPROVED
DATE

INNOVATIVE STRUCTURAL SOLUTIONS

PROJECT 4A
TIPS COMPARISON

SHEET NO:
DATE: NOVEMBER 2020
PAGE NO: